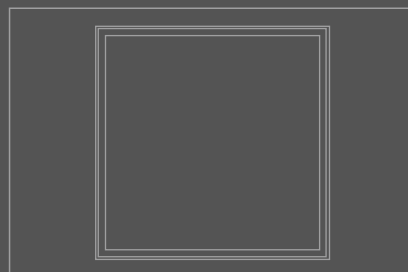
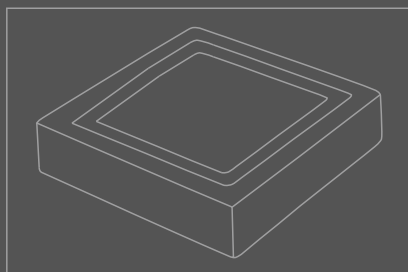
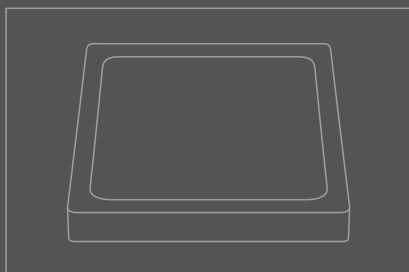
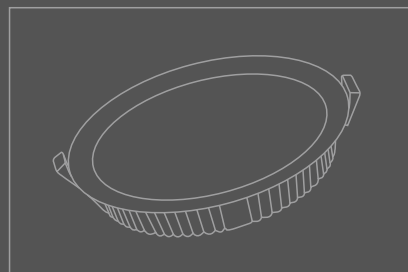
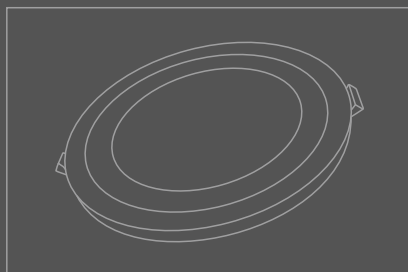
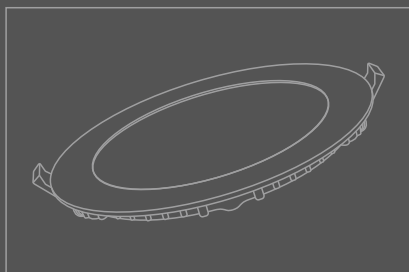


LED PANEL LIGHT CATALOG

2021





Company Introduction

2013

Factory found, Located in Zhongshan , a famous lighting city.
公司成立, 中山古镇——著名的灯具之都。

2014

Start own die-casting factory (make housing in house).
开设压铸厂(事业部), 奠定产业基础

2015

3,000,000 pcs panel / year, one of biggest aluminum panel.
小面板灯突破300万套/年。

2016

Sales turn-over more than 20,000,000 USD.
年产值大于2000万美金。

2017

Start Outdoor business division.
户外事业部成立。

2018

Build standard quality control system, sales turn-over more than 25,000,000 USD.
建立标准的管理体系, 年销售额大于2500万美金。

2019

Outdoor division more than 10,000,000 USD annual turn-over, can produce 2,000,000 pcs flood light, street light, high bay etc. , ISO9001:2015 Certification done by SGS.
户外事业部年销售额超过1000万美金, 每年可以生产200万支投光灯, 路灯, 工矿灯等。通过SGS的ISO9001质量体系认证。

2020

To build more stronger produce line of outdoor light and solar outdoor light. Total follow world brand control system.
打造太阳能、户外产品的产品线 and 竞争力, 导入国际大品牌的研发, 品质的国际管理标准。

2021

Will produce in 60,000 own industry park.
入驻27亩, 60000平方米自建工业园。

Honor Certificate

”

Certificate

Issued by

Details



Government

ISO9001 Quality Assurance System



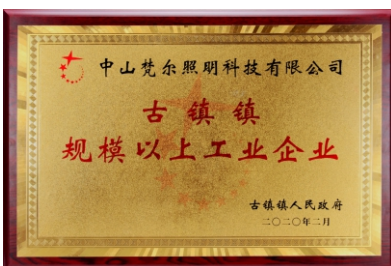
Bureau Veritas (BV)

Business Social Compliance Initiative



Government

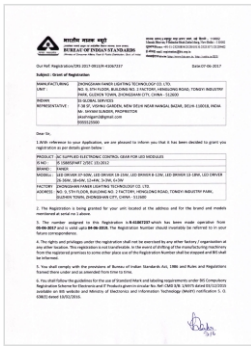
High-tech Enterprises



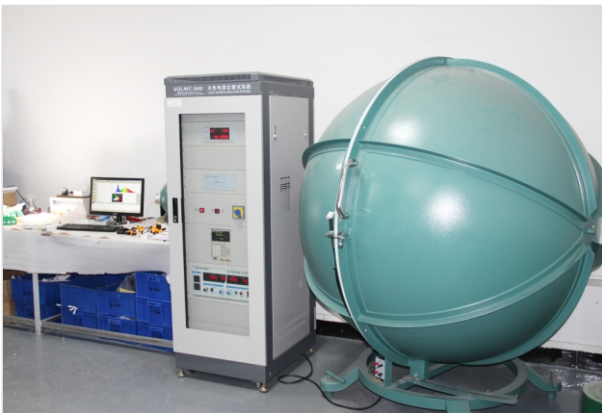
Government

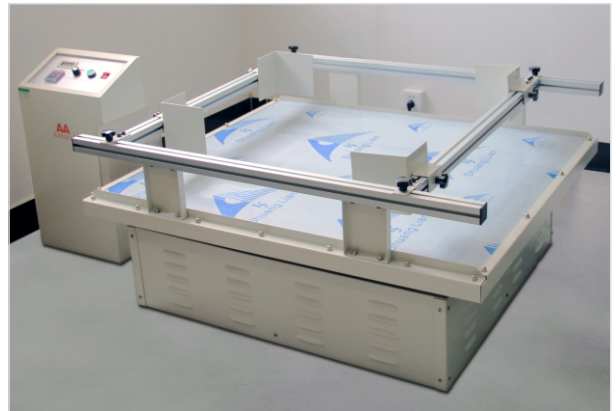
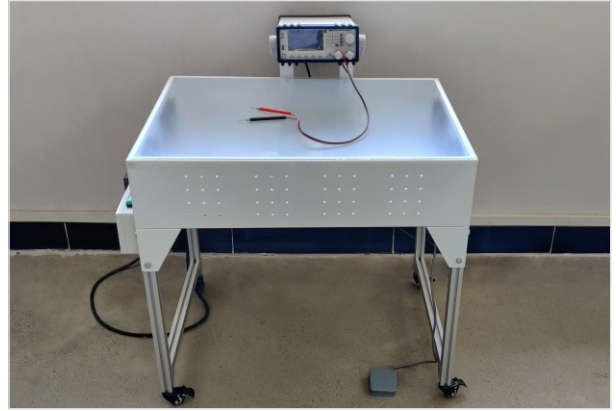
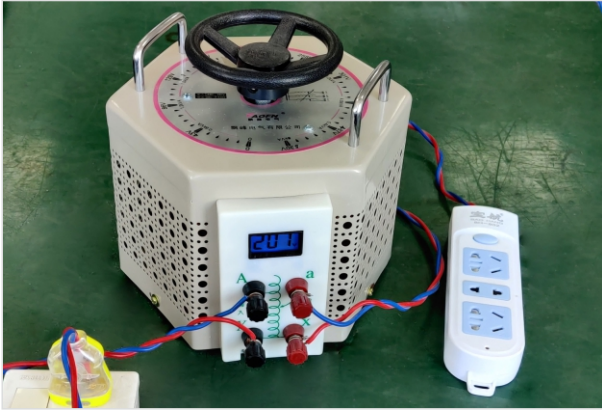
Industrial Enterprises Above Designated Size

Product Certifications



Advanced Equipment





Indoor Lighting Workshop



Outdoor Lighting Workshop



Solar Lighting Workshop



Die-casting Workshop



Product Catalog

1. ETL Panel Light 01-05



2. LED Panel Light 06-16



3. LED Flat Panel Light 17-25



4. LED Colorful 2 in 1 Panel Light 26-29





ETL PANEL LIGHT

JUNCTION BOX SERIES

P113 SERIES

Features:

- * Ultra slim aluminum panel design
- * Good heat sink, no yellow
- * High brightness
- * 3000K, 4000K, 5000K, 3CCT, 5CCT



P113 ETL LED Recessed Light

Power	Diameter	Cut size	Input Voltage	Driver	Dimmable	Warranty	Lumen	CRI	Single CCT	Certification
9W	Ø 120mm	Ø 100mm 4inch	110-130V	ETL Isolated	Tri-ac Dimmable	3/5 Years	700lm	80/90	2700K/3000K/3500K/ 4000K/5000K/6000K	ETL, Energy star
12W	Ø 170mm	Ø 155mm 6inch	110-130V	ETL Isolated	Tri-ac Dimmable	3/5 Years	1000lm	80/90	2700K/3000K/3500K/ 4000K/5000K/6000K	ETL, Energy star
15W	Ø 170mm	Ø 155mm 6inch	110-130V	ETL Isolated	Tri-ac Dimmable	3/5 Years	1200lm	80/90	2700K/3000K/3500K/ 4000K/5000K/6000K	ETL, Energy star

P114 3CCT ETL LED Recessed Light

Power	Diameter	Cut size	Input Voltage	Driver	Dimmable	Warranty	Lumen	CRI	3 CCT	Certification
9W	Ø 120mm	Ø 100mm 4inch	110-130V	ETL Isolated	Tri-ac Dimmable	3/5 Years	700lm	80/90	3000K-4000K-5000K 3CCT Adjustable	ETL, Energy star
12W	Ø 170mm	Ø 155mm 6inch	110-130V	ETL Isolated	Tri-ac Dimmable	3/5 Years	1000lm	80/90	3000K-4000K-5000K 3CCT Adjustable	ETL, Energy star
15W	Ø 170mm	Ø 155mm 6inch	110-130V	ETL Isolated	Tri-ac Dimmable	3/5 Years	1200lm	80/90	3000K-4000K-5000K 3CCT Adjustable	ETL, Energy star

P115 5CCT ETL LED Recessed Light

Power	Diameter	Cut size	Input Voltage	Driver	Dimmable	Warranty	Lumen	CRI	5 CCT	Certification
9W	Ø 120mm	Ø 100mm 4inch	110-130V	ETL Isolated	Tri-ac Dimmable	3/5 Years	700lm	80/90	2700K-3000K-3500K- 4000K-5000K 5 CCT Adjustable	ETL, Energy star
12W	Ø 170mm	Ø 155mm 6inch	110-130V	ETL Isolated	Tri-ac Dimmable	3/5 Years	1000lm	80/90	2700K-3000K-3500K- 4000K-5000K 5 CCT Adjustable	ETL, Energy star
15W	Ø 170mm	Ø 155mm 6inch	110-130V	ETL Isolated	Tri-ac Dimmable	3/5 Years	1200lm	80/90	2700K-3000K-3500K- 4000K-5000K 5 CCT Adjustable	ETL, Energy star

P119 SERIES

Features:

- * Ultra slim aluminum panel design
- * Good heat sink, no yellow
- * High brightness
- * Outer diameter $\phi 127\text{mm}$, 5inch



P119-D 127mm 5 inch ETL LED Recessed Light

Power	Diameter	Cut size	Input Voltage	Driver	Dimmable	Warranty	Lumen	CRI	Single CCT	Certification
9W	Ø 127mm	Ø 100mm 4inch	110-130V	ETL Matel Box	Tri-ac Dimmable	2/3 Years	600lm	80/90	2700K/3000K/3500K/ 4000K/5000K/6000K	ETL, Energy star

P119-F 127mm 5 inch 5CCT ETL LED Recessed Light

Power	Diameter	Cut size	Input Voltage	Driver	Dimmable	Warranty	Lumen	CRI	5 CCT	Certification
9W	Ø 127mm	Ø 100mm 4inch	110-130V	ETL Matel Box	Tri-ac Dimmable	2/3 Years	600lm	80/90	2700K-3000K-3500K- 4000K-5000K 5 CCT Adjustable	ETL, Energy star



P122 SERIES

Features:

- * Ultra slim plastic panel design
- * Good heat sink, no yellow
- * High brightness
- * 3000K, 4000K, 5000K, 3CCT, 5CCT

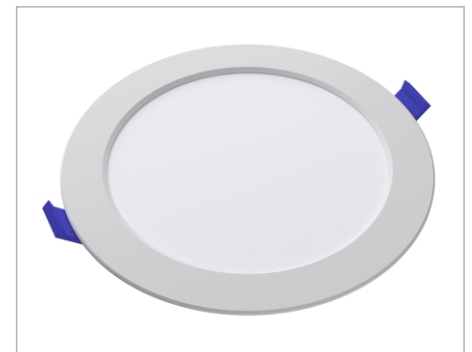
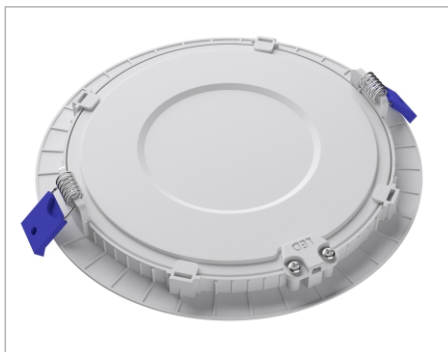


P122-A Eco. ETL LED Recessed Light

Power	Diameter	Cut size	Input Voltage	Driver	Dimmable	Warranty	Lumen	CRI	Single CCT	Certification
9W	Ø 120mm	Ø 100mm 4inch	110-130V	ETL Matel Box	Tri-ac Dimmable	2/3 Years	600lm	80/90	2700K/3000K/3500K/ 4000K/5000K/6000K	ETL, Energy star
12W	Ø 170mm	Ø 155mm 6inch	110-130V	ETL Matel Box	Tri-ac Dimmable	2/3 Years	850lm	80/90	2700K/3000K/3500K/ 4000K/5000K/6000K	ETL, Energy star

P122-C 5CCT Eco. ETL LED Recessed Light

Power	Diameter	Cut size	Input Voltage	Driver	Dimmable	Warranty	Lumen	CRI	5 CCT	Certification
9W	Ø 127mm	Ø 100mm 4inch	110-130V	ETL Matel Box	Tri-ac Dimmable	2/3 Years	600lm	80/90	2700K-3000K-3500K- 4000K-5000K 5 CCT Adjustable	ETL, Energy star
12W	Ø 170mm	Ø 155mm 6inch	110-130V	ETL Matel Box	Tri-ac Dimmable	2/3 Years	850lm	80/90	2700K-3000K-3500K- 4000K-5000K 5 CCT Adjustable	ETL, Energy star



P130 SERIES

Features:

- * Ultra slim aluminum panel design
- * Good heat sink, no yellow
- * High brightness
- * 3000K, 4000K, 5000K, 3CCT, 5CCT

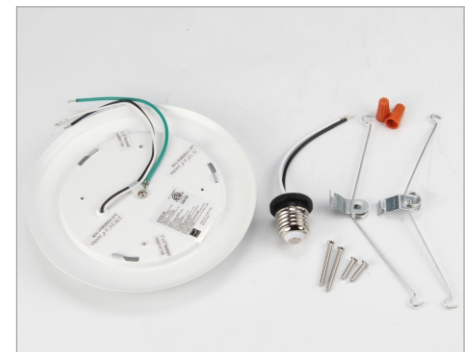
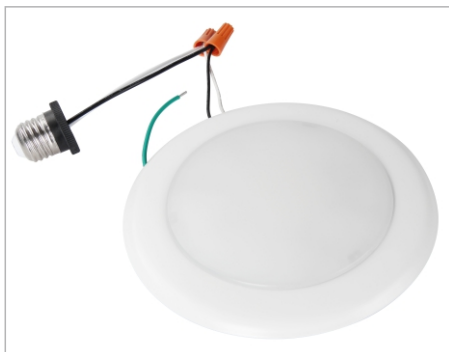


P130-A Eco. ETL LED Recessed Ceiling Light with Junction box - E26

Power	Diameter	Cut size	Input Voltage	Driver	Dimmable	Warranty	Lumen	CRI	Single CCT	Certification
12W	Ø 170mm	Ø 155mm 6inch	110-130V	Junction box (E26)	Tri-ac Dimmable	3/5 Years	960lm	80/90	2700K/3000K/3500K/ 4000K/5000K/6000K	ETL, Energy star
15W	Ø 170mm	Ø 155mm 6inch	110-130V	Junction box (E26)	Tri-ac Dimmable	3/5 Years	1200lm	80/90	2700K/3000K/3500K/ 4000K/5000K/6000K	ETL, Energy star

P130-D Eco. 6-CCT ETL LED Recessed Ceiling Light with Junction box - E26

Power	Diameter	Cut size	Input Voltage	Driver	Dimmable	Warranty	Lumen	CRI	6 CCT	Certification
12W	Ø 170mm	Ø 155mm 6inch	110-130V	Junction box (E26)	Tri-ac Dimmable	3/5 Years	960lm	80/90	2700K-3000K-3500K- 4000K-5000K-6000K 6CCT Adjustable	ETL, Energy star
15W	Ø 170mm	Ø 155mm 6inch	110-130V	Junction box (E26)	Tri-ac Dimmable	3/5 Years	1200lm	80/90	2700K-3000K-3500K- 4000K-5000K-6000K 6CCT Adjustable	ETL, Energy star





LED PANEL LIGHT
SLIM PANEL LIGHT SERIES

P108 SERIES

Features:

- * Slim design aluminum panel
- * High quality finishing
- * Good heatsink, long life, no yellow
- * High quality driver and LED
- * BIS/CB/IECEE/CE certification



P108 Aluminum Ultra Slim Panel Light

Power	Diameter	Cut size	Input Voltage	Driver	Beam Angle	Warranty	Lumen	CRI	CCT	Certification
3W	Ø 85mm	Ø 72mm	100-277V	CB/CE/BIS Driver	>110°	2/3/5 Years	180lm	80	3000K/4000K/6500K	CE-ERP,CB,BIS
6W	Ø 120mm	Ø 100mm	100-277V	CB/CE/BIS Driver	>110°	2/3/5 Years	360lm	80	3000K/4000K/6500K	CE-ERP,CB,BIS
9W	Ø 150mm	Ø 135mm	100-277V	CB/CE/BIS Driver	>110°	2/3/5 Years	650lm	80	3000K/4000K/6500K	CE-ERP,CB,BIS
12W	Ø 170mm	Ø 155mm	100-277V	CB/CE/BIS Driver	>110°	2/3/5 Years	960lm	80	3000K/4000K/6500K	CE-ERP,CB,BIS
15W	Ø 190mm	Ø 175mm	100-277V	CB/CE/BIS Driver	>110°	2/3/5 Years	1200lm	80	3000K/4000K/6500K	CE-ERP,CB,BIS
18W	Ø 225mm	Ø 200mm	100-277V	CB/CE/BIS Driver	>110°	2/3/5 Years	1440lm	80	3000K/4000K/6500K	CE-ERP,CB,BIS
24W	Ø 300mm	Ø 285mm	100-277V	CB/CE/BIS Driver	>110°	2/3/5 Years	1920lm	80	3000K/4000K/6500K	CE-ERP,CB,BIS



Surface Ring Design



P204 SERIES

Features:

- * Slim design aluminum panel
- * High quality finishing
- * Good heatsink, long life, no yellow
- * High quality driver and LED
- * BIS/CB/IECEE/CE certification



P204 Eco. Aluminum Ultra Slim Panel Light

Power	Diameter	Cut size	Input Voltage	Driver	Beam Angle	Warranty	Lumen	CRI	CCT	Certification
3W	Ø 85mm	Ø 72mm	100-277V	CB/CE/BIS Driver	>110°	2 Years	180lm	80	3000K/4000K/6500K	CE-ERP,CB,BIS
6W	Ø 120mm	Ø 100mm	100-277V	CB/CE/BIS Driver	>110°	2 Years	360lm	80	3000K/4000K/6500K	CE-ERP,CB,BIS
9W	Ø 150mm	Ø 135mm	100-277V	CB/CE/BIS Driver	>110°	2 Years	650lm	80	3000K/4000K/6500K	CE-ERP,CB,BIS
12W	Ø 170mm	Ø 155mm	100-277V	CB/CE/BIS Driver	>110°	2 Years	960lm	80	3000K/4000K/6500K	CE-ERP,CB,BIS
15W	Ø 190mm	Ø 175mm	100-277V	CB/CE/BIS Driver	>110°	2 Years	1200lm	80	3000K/4000K/6500K	CE-ERP,CB,BIS
18W	Ø 225mm	Ø 200mm	100-277V	CB/CE/BIS Driver	>110°	2 Years	1440lm	80	3000K/4000K/6500K	CE-ERP,CB,BIS
24W	Ø 300mm	Ø 285mm	100-277V	CB/CE/BIS Driver	>110°	2 Years	1920lm	80	3000K/4000K/6500K	CE-ERP,CB,BIS



P106 SERIES

Features:

- * High quality plastic panel
- * Inbuilt driver and driver easy to change
- * High brightness
- * BIS/CB/CE/ROHS certification
- * Surface ring available



P106 PC Ultra Slim Panel Light

Power	Diameter	Cut size	Input Voltage	Driver	Beam Angle	Warranty	Lumen	CRI	CCT	Certification
3W	Ø 85mm	Ø 72mm	100-277V	Inbuilt Driver	>110°	2 Years	180lm	80	3000K/4000K/6500K	CE-ERP,CB,BIS
6W	Ø 120mm	Ø 100mm	100-277V	Inbuilt Driver	>110°	2 Years	360lm	80	3000K/4000K/6500K	CE-ERP,CB,BIS
12W	Ø 170mm	Ø 155mm	100-277V	Inbuilt Driver	>110°	2 Years	960lm	80	3000K/4000K/6500K	CE-ERP,CB,BIS
15W	Ø 170mm	Ø 155mm	100-277V	Inbuilt Driver	>110°	2 Years	1200lm	80	3000K/4000K/6500K	CE-ERP,CB,BIS
18W	Ø 225mm	Ø 200mm	100-277V	Inbuilt Driver	>110°	2 Years	1440lm	80	3000K/4000K/6500K	CE-ERP,CB,BIS



Surface Ring Design



S101 SERIES

Features:

- * No light leak design
- * High brightness: 100lm/W
- * CB/BIS/CE/ROHS certification



S101 Surface Mounted Panel Light

Power	Diameter	Height	Input Voltage	Driver	Beam Angle	Warranty	Lumen	CRI	CCT	Certification
6W	Ø 120mm	35mm	100-277V	CB/CE/BIS Driver	>110°	2 Years	360lm	80	3000K/4000K/6500K	CE-ERP,CB,BIS
12W	Ø 170mm	35mm	100-277V	CB/CE/BIS Driver	>110°	2 Years	960lm	80	3000K/4000K/6500K	CE-ERP,CB,BIS
18W	Ø 225mm	35mm	100-277V	CB/CE/BIS Driver	>110°	2 Years	1200lm	80	3000K/4000K/6500K	CE-ERP,CB,BIS
24W	Ø 300mm	35mm	100-277V	CB/CE/BIS Driver	>110°	2 Years	1440lm	80	3000K/4000K/6500K	CE-ERP,CB,BIS
30W	Ø 300mm	35mm	100-277V	CB/CE/BIS Driver	>110°	2 Years	2400lm	80	3000K/4000K/6500K	CE-ERP,CB,BIS



S103 SERIES

Features:

- * Narrow edge aluminum surface panel design
- * High brightness
- * Slim driver
- * BIS/CE/ROHS



S103 Surface Mounted Panel Light

Power	Diameter	Height	Input Voltage	Driver	Beam Angle	Warranty	Lumen	CRI	CCT	Certification
8W	Ø 120mm	25mm	100-277V	CB/CE/BIS Driver	>110°	2 Years	360lm	80	3000K/4000K/6500K	CE-ERP,CB,BIS
15W	Ø 170mm	25mm	100-277V	CB/CE/BIS Driver	>110°	2 Years	960lm	80	3000K/4000K/6500K	CE-ERP,CB,BIS
22W	Ø 225mm	25mm	100-277V	CB/CE/BIS Driver	>110°	2 Years	1200lm	80	3000K/4000K/6500K	CE-ERP,CB,BIS
30W	Ø 300mm	35mm	100-277V	CB/CE/BIS Driver	>110°	2 Years	1440lm	80	3000K/4000K/6500K	CE-ERP,CB,BIS



S208 SERIES

Features:

- * No light leak design
- * High brightness: 100lm/W
- * CB/BIS/CE/ROHS certification



S208 Eco. Surface Mounted Panel Light

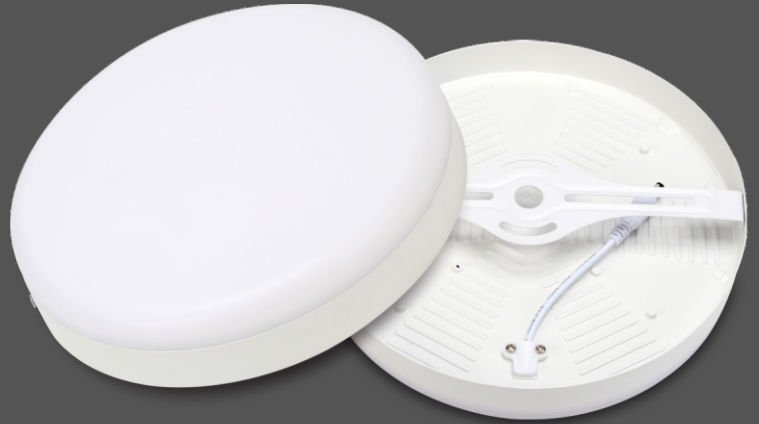
Power	Diameter	Height	Input Voltage	Driver	Beam Angle	Warranty	Lumen	CRI	CCT	Certification
6W	Ø 120mm	35mm	100-277V	CB/CE/BIS Driver	>110°	2 Years	360lm	80	3000K/4000K/6500K	CE-ERP,CB,BIS
12W	Ø 170mm	35mm	100-277V	CB/CE/BIS Driver	>110°	2 Years	960lm	80	3000K/4000K/6500K	CE-ERP,CB,BIS
18W	Ø 225mm	35mm	100-277V	CB/CE/BIS Driver	>110°	2 Years	1200lm	80	3000K/4000K/6500K	CE-ERP,CB,BIS
24W	Ø 300mm	35mm	100-277V	CB/CE/BIS Driver	>110°	2 Years	1440lm	80	3000K/4000K/6500K	CE-ERP,CB,BIS
30W	Ø 300mm	35mm	100-277V	CB/CE/BIS Driver	>110°	2 Years	2400lm	80	3000K/4000K/6500K	CE-ERP,CB,BIS



S207 SERIES

Features:

- * Frameless Design
- * High brightness
- * CB/BIS/CE/ROHS certification



S207 Frameless Surface Mounted Panel Light

Power	Diameter	Height	Input Voltage	Driver	Beam Angle	Warranty	Lumen	CRI	CCT	Certification
18W	Ø 120mm	32mm	100-277V	CB/CE/BIS Driver	>110°	2 Years	1440lm	80	3000K/4000K/6500K	CE-ERP,CB,BIS
24W	Ø 175mm	32mm	100-277V	CB/CE/BIS Driver	>110°	2 Years	1920lm	80	3000K/4000K/6500K	CE-ERP,CB,BIS
36W	Ø 225mm	32mm	100-277V	CB/CE/BIS Driver	>110°	2 Years	2900lm	80	3000K/4000K/6500K	CE-ERP,CB,BIS
48W	Ø 300mm	32mm	100-277V	CB/CE/BIS Driver	>110°	2 Years	3900lm	80	3000K/4000K/6500K	CE-ERP,CB,BIS



L101 SERIES

Features:

- * High quality aluminum down light
- * CB/CE/ROHS certification



L101 LED Down Light

Power	Diameter	Height	Input Voltage	Driver	Beam Angle	Warranty	Lumen	CRI	CCT	Certification
10W	Ø 100×38mm	75mm	100-277V	CB/CE/BIS Driver	>110°	2/3/5 Years	750lm	80	3000K/4000K/6500K	CE-ERP,CB,BIS
15W	Ø 120×38mm	95mm	100-277V	CB/CE/BIS Driver	>110°	2/3/5 Years	1200lm	80	3000K/4000K/6500K	CE-ERP,CB,BIS
20W	Ø 155×38mm	130mm	100-277V	CB/CE/BIS Driver	>110°	2/3/5 Years	1600lm	80	3000K/4000K/6500K	CE-ERP,CB,BIS
25W	Ø 170×38mm	145mm	100-277V	CB/CE/BIS Driver	>110°	2/3/5 Years	2000lm	80	3000K/4000K/6500K	CE-ERP,CB,BIS
30W	Ø 190×38mm	160mm	100-277V	CB/CE/BIS Driver	>110°	2/3/5 Years	2400lm	80	3000K/4000K/6500K	CE-ERP,CB,BIS
36W	Ø 230×38mm	200mm	100-277V	CB/CE/BIS Driver	>110°	2/3/5 Years	2900lm	80	3000K/4000K/6500K	CE-ERP,CB,BIS



L204 SERIES

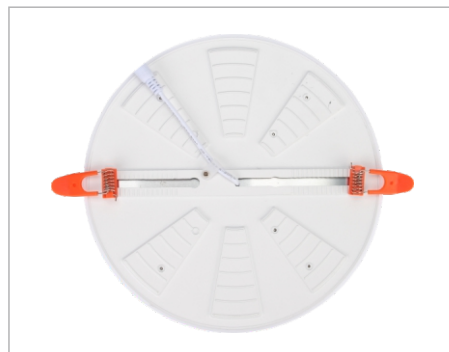
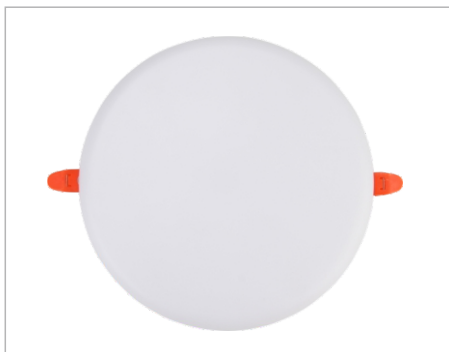
Features:

- * Cut out size adjustable
- * Edgeless design
- * CB/BIS/CE/ROHS certification



L204 Frameless LED Down Light With Adjustable Cut Hole Size

Power	Diameter	Cut size	Input Voltage	Driver	Beam Angle	Warranty	Lumen	CRI	CCT	Certification
9W	Ø 85x20mm	Ø 30-72mm	100-277V	CB/CE/BIS Driver	>110°	2/3 Years	720lm	80	3000K/4000K/6500K	CE-ERP,CB,BIS
18W	Ø 120x20mm	Ø 30-105mm	100-277V	CB/CE/BIS Driver	>110°	2/3 Years	1440lm	80	3000K/4000K/6500K	CE-ERP,CB,BIS
24W	Ø 170x20mm	Ø 30-155mm	100-277V	CB/CE/BIS Driver	>110°	2/3 Years	2000lm	80	3000K/4000K/6500K	CE-ERP,CB,BIS
36W	Ø 225x20mm	Ø 30-205mm	100-277V	CB/CE/BIS Driver	>110°	2/3 Years	2900lm	80	3000K/4000K/6500K	CE-ERP,CB,BIS



L209 SERIES

Features:

- * Cut out size adjustable
- * Edgeless design
- * CB/BIS/CE/ROHS certification



L209 Anti-glare LED Down Light With Adjustable Cut Hole Size

Power	Diameter	Cut size	Input Voltage	Driver	Beam Angle	Warranty	Lumen	CRI	CCT	Certification
9W	Ø 85x20mm	Ø 30-72mm	100-277V	CB/CE/BIS Driver	>110°	2/3 Years	900lm	80	3000K/4000K/6500K	CE-ERP,CB,BIS
18W	Ø 120x20mm	Ø 30-105mm	100-277V	CB/CE/BIS Driver	>110°	2/3 Years	1800lm	80	3000K/4000K/6500K	CE-ERP,CB,BIS
24W	Ø 170x20mm	Ø 30-155mm	100-277V	CB/CE/BIS Driver	>110°	2/3 Years	2400lm	80	3000K/4000K/6500K	CE-ERP,CB,BIS
36W	Ø 225x20mm	Ø 30-205mm	100-277V	CB/CE/BIS Driver	>110°	2/3 Years	3600lm	80	3000K/4000K/6500K	CE-ERP,CB,BIS



G501 SERIES

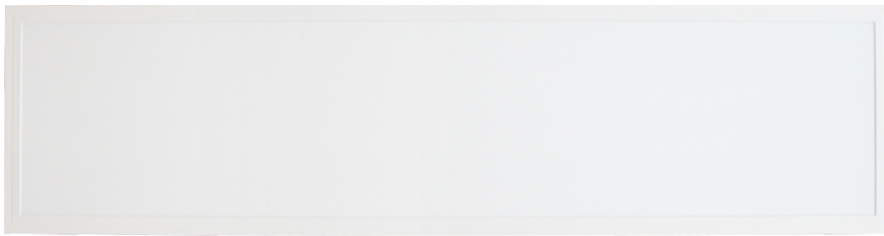


G501-A 603*603mm ETL 0-10V Dimmable LED Panel Light

Power	Diameter	Height	Input Voltage	Driver	Beam Angle	Warranty	Lumen	CRI	Single CCT	Certification
40W	603*603mm	30mm	100-277V	0-10V Dimmable	>110°	5 Years	4000lm	80	3000K/4000K/6000K	ETL,Energy star
50W	603*603mm	30mm	100-277V	0-10V Dimmable	>110°	5 Years	5000lm	80	3000K/4000K/6000K	ETL,Energy star

G501-B 603*603mm 3-CCT ETL 0-10V Dimmable LED Panel Light

Power	Diameter	Height	Input Voltage	Driver	Beam Angle	Warranty	Lumen	CRI	3 CCT	Certification
40W	603*603mm	30mm	100-277V	0-10V Dimmable	>110°	5 Years	4000lm	80	3000K-4000K-6000K 3 CCT Adjustable	ETL,Energy star
50W	603*603mm	30mm	100-277V	0-10V Dimmable	>110°	5 Years	5000lm	80	3000K-4000K-6000K 3 CCT Adjustable	ETL,Energy star



G502-A 303*1213mm ETL 0-10V Dimmable LED Panel Light

Power	Diameter	Height	Input Voltage	Driver	Beam Angle	Warranty	Lumen	CRI	Single CCT	Certification
40W	303*1213mm	30mm	100-277V	0-10V Dimmable	>110°	5 Years	4000lm	80	3000K/4000K/6000K	ETL,Energy star
50W	303*1213mm	30mm	100-277V	0-10V Dimmable	>110°	5 Years	5000lm	80	3000K/4000K/6000K	ETL,Energy star

G502-A 303*1213mm 3-CCT ETL 0-10V Dimmable LED Panel Light

Power	Diameter	Height	Input Voltage	Driver	Beam Angle	Warranty	Lumen	CRI	3 CCT	Certification
40W	303*1213mm	30mm	100-277V	0-10V Dimmable	>110°	5 Years	4000lm	80	3000K-4000K-6000K 3 CCT Adjustable	ETL,Energy star
50W	303*1213mm	30mm	100-277V	0-10V Dimmable	>110°	5 Years	5000lm	80	3000K-4000K-6000K 3 CCT Adjustable	ETL,Energy star



G503-A 603*1213mm ETL 0-10V Dimmable LED Panel Light

Power	Diameter	Height	Input Voltage	Driver	Beam Angle	Warranty	Lumen	CRI	Single CCT	Certification
40W	603*1213mm	30mm	100-277V	0-10V Dimmable	>110°	5 Years	5000lm	80	3000K/4000K/6000K	ETL,Energy star
50W	603*1213mm	30mm	100-277V	0-10V Dimmable	>110°	5 Years	7000lm	80	3000K/4000K/6000K	ETL,Energy star

G503-B 603*1213mm 3-CCT ETL 0-10V Dimmable LED Panel Light

Power	Diameter	Height	Input Voltage	Driver	Beam Angle	Warranty	Lumen	CRI	3 CCT	Certification
40W	603*1213mm	30mm	100-277V	0-10V Dimmable	>110°	5 Years	5000lm	80	3000K-4000K-6000K 3 CCT Adjustable	ETL,Energy star
50W	603*1213mm	30mm	100-277V	0-10V Dimmable	>110°	5 Years	7000lm	80	3000K-4000K-6000K 3 CCT Adjustable	ETL,Energy star

G308 SERIES



G308 595*595mm LED Panel Light

Power	Diameter	Height	Input Voltage	Driver	Beam Angle	Warranty	Lumen	CRI	CCT	Certification
36W	595*595mm	30mm	100-277V	CE/BIS/CB	>110°	2/3/5 Years	3600lm	80	4000K/6000K	CE-ERP,BIS,CB
40W	595*595mm	30mm	100-277V	CE/BIS/CB	>110°	2/3/5 Years	4000lm	80	4000K/6000K	CE-ERP,BIS,CB
48W	595*595mm	30mm	100-277V	CE/BIS/CB	>110°	2/3/5 Years	4800lm	80	4000K/6000K	CE-ERP,BIS,CB
60W	595*595mm	30mm	100-277V	CE/BIS/CB	>110°	2/3/5 Years	6000lm	80	4000K/6000K	CE-ERP,BIS,CB



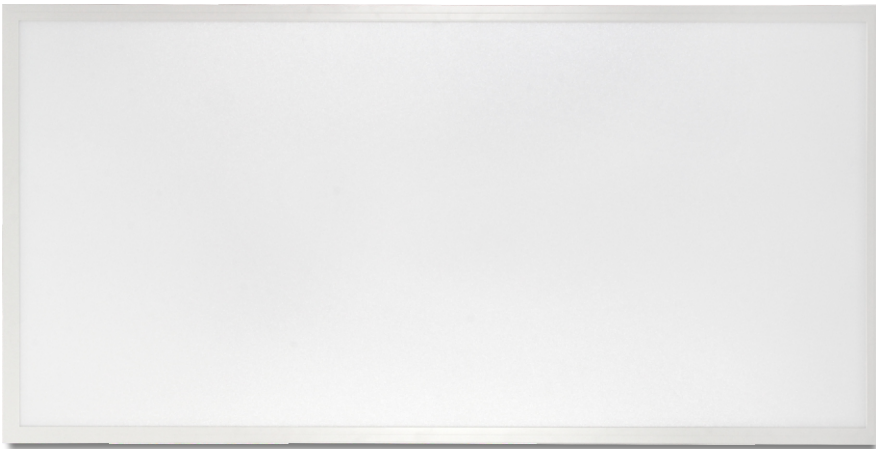
G306 295*295mm LED Panel Light

Power	Diameter	Height	Input Voltage	Driver	Beam Angle	Warranty	Lumen	CRI	CCT	Certification
24W	295*295mm	30mm	100-277V	CE/BIS/CB	>110°	2/3/5 Years	2400lm	80	4000K/6000K	CE-ERP,BIS,CB



G309 295*1195mm LED Panel Light

Power	Diameter	Height	Input Voltage	Driver	Beam Angle	Warranty	Lumen	CRI	CCT	Certification
40W	295*1195mm	30mm	100-277V	CE/BIS/CB	>110°	2/3/5 Years	4000lm	80	4000K/6000K	CE-ERP,BIS,CB



G310 595*1195mm LED Panel Light

Power	Diameter	Height	Input Voltage	Driver	Beam Angle	Warranty	Lumen	CRI	CCT	Certification
60W	595*1195mm	30mm	100-277V	CE/BIS/CB	>110°	2/3/5 Years	6000lm	80	4000K/6000K	CE-ERP,BIS,CB
72W	595*1195mm	30mm	100-277V	CE/BIS/CB	>110°	2/3/5 Years	7200lm	80	4000K/6000K	CE-ERP,BIS,CB

G311 SERIES



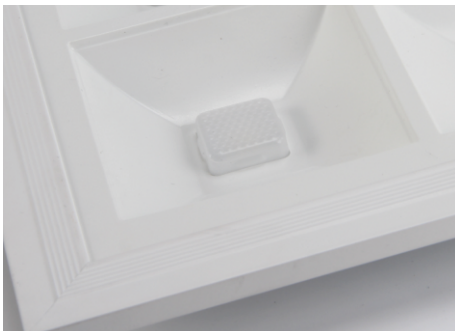
G311 595*595mm Anti-glare UGR 19 LED Panel Light

Power	Diameter	Height	Input Voltage	Driver	Beam Angle	Warranty	Lumen	CRI	CCT	Certification
40W	595*595mm	30mm	100-277V	CE/BIS/CB	>110°	2/3/5 Years	5000lm	80	4000K/6000K	CE-ERP,BIS,CB
48W	595*595mm	30mm	100-277V	CE/BIS/CB	>110°	2/3/5 Years	6000lm	80	4000K/6000K	CE-ERP,BIS,CB
72W	595*595mm	30mm	100-277V	CE/BIS/CB	>110°	2/3/5 Years	7500lm	80	4000K/6000K	CE-ERP,BIS,CB
90W	595*595mm	30mm	100-277V	CE/BIS/CB	>110°	2/3/5 Years	9000lm	80	4000K/6000K	CE-ERP,BIS,CB



G312 295*1195mm LED Panel Light

Power	Diameter	Height	Input Voltage	Driver	Beam Angle	Warranty	Lumen	CRI	CCT	Certification
40W	295*1195mm	30mm	100-277V	CE/BIS/CB	>110°	2/3/5 Years	5000lm	80	4000K/6000K	CE-ERP,BIS,CB

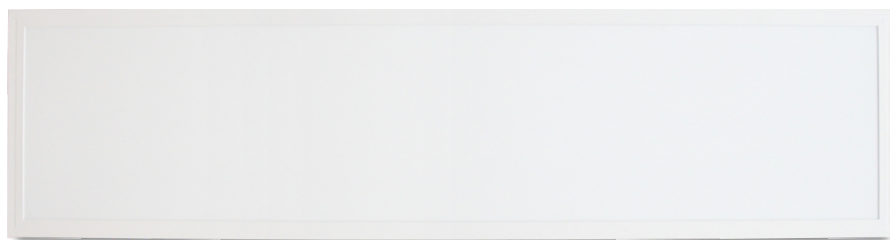


G404 SERIES



G404 600*600mm Surface Mounted LED Panel Light

Power	Diameter	Height	Input Voltage	Driver	Beam Angle	Warranty	Lumen	CRI	CCT	Certification
36W	600*600mm	43mm	100-277V	CE/BIS/CB	>110°	2/3/5 Years	3600lm	80	4000K/6000K	CE-ERP,BIS,CB
40W	600*600mm	43mm	100-277V	CE/BIS/CB	>110°	2/3/5 Years	4000lm	80	4000K/6000K	CE-ERP,BIS,CB
48W	600*600mm	43mm	100-277V	CE/BIS/CB	>110°	2/3/5 Years	4800lm	80	4000K/6000K	CE-ERP,BIS,CB
60W	600*600mm	43mm	100-277V	CE/BIS/CB	>110°	2/3/5 Years	6000lm	80	4000K/6000K	CE-ERP,BIS,CB



G405 300*1200mm Surface Mounted LED Panel Light

Power	Diameter	Height	Input Voltage	Driver	Beam Angle	Warranty	Lumen	CRI	CCT	Certification
40W	300*1200mm	43mm	100-277V	CE/BIS/CB	>110°	2/3/5 Years	4000lm	80	4000K/6000K	CE-ERP,BIS,CB

G407 SERIES



G407 600*600mm Anti-glare UGR 19 Surface Mounted LED Panel Light

Power	Diameter	Height	Input Voltage	Driver	Beam Angle	Warranty	Lumen	CRI	CCT	Certification
36W	600*600mm	43mm	100-277V	CE/BIS/CB	>110°	2/3/5 Years	3600lm	80	4000K/6000K	CE-ERP,BIS,CB
40W	600*600mm	43mm	100-277V	CE/BIS/CB	>110°	2/3/5 Years	4000lm	80	4000K/6000K	CE-ERP,BIS,CB
48W	600*600mm	43mm	100-277V	CE/BIS/CB	>110°	2/3/5 Years	4800lm	80	4000K/6000K	CE-ERP,BIS,CB
60W	600*600mm	43mm	100-277V	CE/BIS/CB	>110°	2/3/5 Years	6000lm	80	4000K/6000K	CE-ERP,BIS,CB



G408 300*1200mm Anti-glare UGR19 Surface Mounted LED Panel Light

Power	Diameter	Height	Input Voltage	Driver	Beam Angle	Warranty	Lumen	CRI	CCT	Certification
40W	300*1200mm	43mm	100-277V	CE/BIS/CB	>110°	2/3/5 Years	4000lm	80	4000K/6000K	CE-ERP,BIS,CB

G101 SERIES

Features:

- * Round/Square die-casting big panel
- * High brightness 100lm/W, high CRI
- * Narrow edge design



G101 400mm Surface Mounted LED Panel Light

Power	Diameter	Height	Input Voltage	Driver	Beam Angle	Warranty	Lumen	CRI	CCT	Certification
36W	Ø 400mm	35mm	100-277V	CB/CE/BIS	>110°	3/5 Years	3600lm	80	4000K/6500K	CE-ERP,CB,BIS

G102 500mm Surface Mounted LED Panel Light

Power	Diameter	Height	Input Voltage	Driver	Beam Angle	Warranty	Lumen	CRI	CCT	Certification
48W	Ø 500mm	35mm	100-277V	CB/CE/BIS	>110°	3/5 Years	4800lm	80	4000K/6500K	CE-ERP,CB,BIS

G103 600mm Surface Mounted LED Panel Light

Power	Diameter	Height	Input Voltage	Driver	Beam Angle	Warranty	Lumen	CRI	CCT	Certification
48W	Ø 600mm	35mm	100-277V	CB/CE/BIS	>110°	3/5 Years	4800lm	80	4000K/6500K	CE-ERP,CB,BIS
60W	Ø 600mm	35mm	100-277V	CB/CE/BIS	>110°	3/5 Years	4800lm	80	4000K/6500K	CE-ERP,CB,BIS





COLORFUL 2 IN 1 PANEL LIGHT

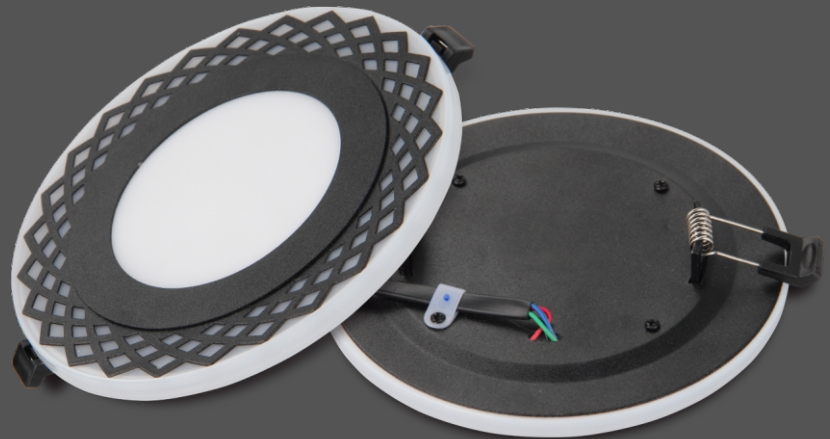
Green/Red/Blue/Pink/Warm white



K203 SERIES

Features:

- * Very stable 2 in 1 colorful slim panel
- * Green/Red/Blue/Pink/Warm white
- * 4 wire with 3 step control



K203 2 In 1 Colorful Recessed Panel Light -- Black Housing

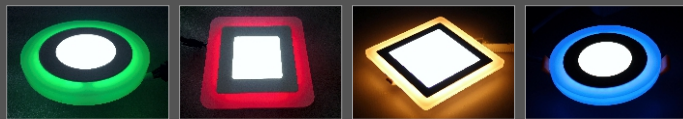
Power	Diameter	Cut size	Input Voltage	Driver	Beam Angle	Warranty	Lumen	CRI	CCT	Certification
3+3W	Ø 105mm	Ø 72mm	100-265V	2 in 1 Driver	>110°	2/3 Years	180lm	80	6500K + Blue/Red/Green/WW	CB, BIS
6+3W	Ø 145mm	Ø 105mm	100-265V	2 in 1 Driver	>110°	2/3 Years	360lm	80	6500K + Blue/Red/Green/WW	CB, BIS
12+4W	Ø 195mm	Ø 155mm	100-265V	2 in 1 Driver	>110°	2/3 Years	960lm	80	6500K + Blue/Red/Green/WW	CB, BIS
18+6W	Ø 245mm	Ø 205mm	100-265V	2 in 1 Driver	>110°	2/3 Years	1440lm	80	6500K + Blue/Red/Green/WW	CB, BIS



K201 SERIES

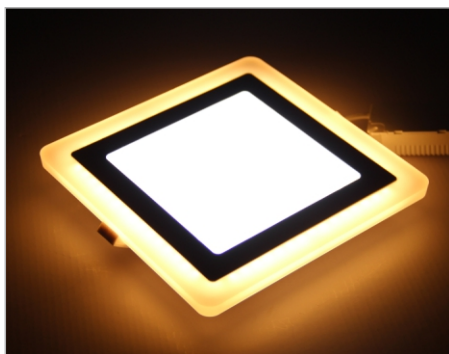
Features:

- * Very stable 2 in 1 colorful slim panel
- * Green/Red/Blue/Pink/Warm white
- * 4 wire with 3 step control



K201 2 In 1 Colorful Recessed Panel Light

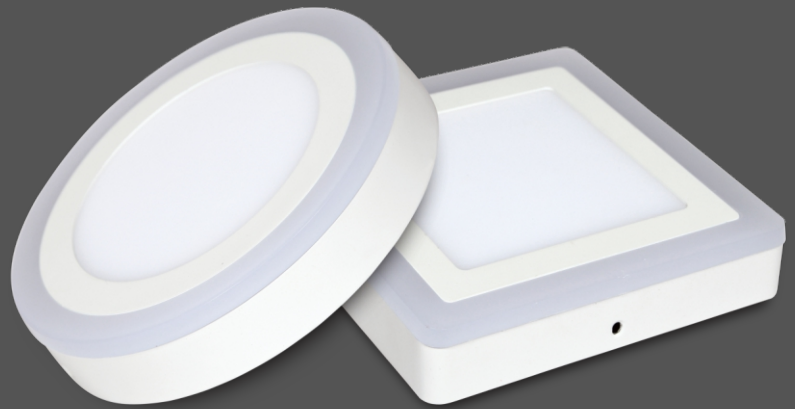
Power	Diameter	Cut size	Input Voltage	Driver	Beam Angle	Warranty	Lumen	CRI	CCT	Certification
3+3W	Ø 105mm	Ø 72mm	100-265V	2 in 1 Driver	>110°	2/3 Years	180lm	80	6500K + Blue/Red/Green/WW	CB, BIS
6+3W	Ø 145mm	Ø 100mm	100-265V	2 in 1 Driver	>110°	2/3 Years	360lm	80	6500K + Blue/Red/Green/WW	CB, BIS
12+4W	Ø 195mm	Ø 155mm	100-265V	2 in 1 Driver	>110°	2/3 Years	960lm	80	6500K + Blue/Red/Green/WW	CB, BIS
18+6W	Ø 245mm	Ø 200mm	100-265V	2 in 1 Driver	>110°	2/3 Years	1440lm	80	6500K + Blue/Red/Green/WW	CB, BIS



K202 SERIES

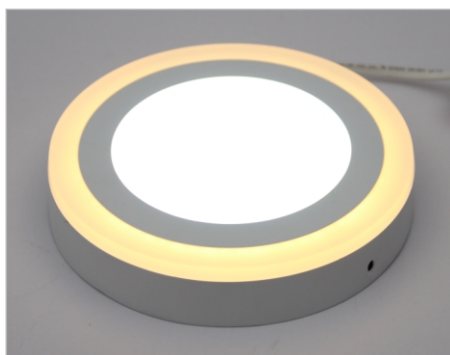
Features:

- * Very stable 2 in 1 colorful slim panel
- * Green/Red/Blue/Pink/Warm white
- * 4 wire with 3 step control



K202 2 In 1 Colorful Surface Mounted Panel Light

Power	Diameter	Height	Input Voltage	Driver	Beam Angle	Warranty	Lumen	CRI	CCT	Certification
3+3W	Ø 105mm	28mm	100-265V	2 in 1 Driver	>110°	2/3 Years	180lm	80	6500K + Blue/Red/Green/WW	CB,BIS
6+3W	Ø 145mm	28mm	100-265V	2 in 1 Driver	>110°	2/3 Years	360lm	80	6500K + Blue/Red/Green/WW	CB,BIS
12+4W	Ø 195mm	28mm	100-265V	2 in 1 Driver	>110°	2/3 Years	960lm	80	6500K + Blue/Red/Green/WW	CB,BIS
18+6W	Ø 245mm	28mm	100-265V	2 in 1 Driver	>110°	2/3 Years	1440lm	80	6500K + Blue/Red/Green/WW	CB,BIS



中山梵尔照明科技有限公司

ZHONGSHAN FANER LIGHTING TECHNOLOGY CO.,LTD.

Tel: 86-0760-22326120 Fax: 86-0760-22326120

Contact: Jason Lian +86-18576003768

E-mail: sales01@fanerled.com

Website: www.faner-led.com

Add: No.2 Henglong Road, Tongyi Industrial Park,
Guzhen Town, Zhongshan City, China.

联系人: 石先生 18576003368 / 练先生 18576003768

地址: 广东省中山市古镇镇同益工业园恒隆路2号